



268  
HANDHELD CASES

292  
UNIVERSAL  
ENCLOSURES

318  
HEAVY DUTY  
AND ELECTRICAL  
ENCLOSURES

342  
DESKTOP AND  
INSTRUMENT  
CASES

348  
DEVELOPMENT  
BOARD  
ENCLOSURES

367  
ROOM SENSOR  
ENCLOSURES

370  
CUSTOM SIZED  
ENCLOSURES

PLASTIC ENCLOSURES

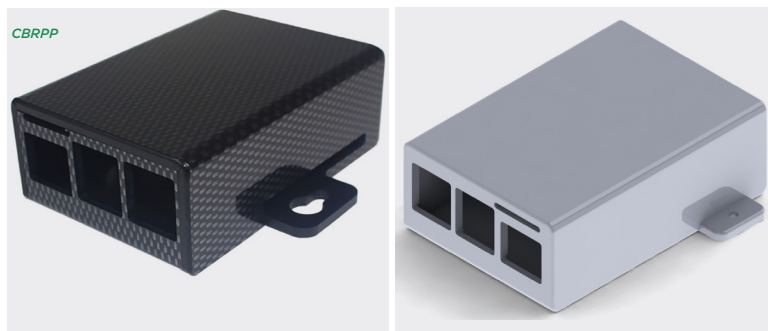
352

# Raspberry Pi B+ or Pi 2 flanged enclosures

## Product overview

No screws, no glue – just add your Raspberry Pi filling!

- Designed to house the Raspberry Pi B+ or Pi 2 via clip-in grooves - **NO SCREWS REQUIRED!**
- All cut-outs are pre-cut into the case - **NO MODS REQUIRED!**
- I/O connector can be accessed through a slot in the base of the enclosure
- Wall mountable via keyhole slots in flanges
- Top of the enclosure can be removed whilst the base is still attached to the wall



PART NO.	MATERIALS	DIMENSIONS
CBRPP-F	Thickness 3mm	L 89.4mm x W 80.4mm x H 32mm

## Available in a range of colours, textures and finishes

**Stock colours**

**Textured**

White    Light grey    Mid grey

Dark grey    Grey white    Black

**High gloss**

White

**Other available colours**

**Gloss**

White    Red    Green    Yellow    Orange

Transparent    Lilac    Purple    Black    Blue

**High gloss**

Carbon fibre    Metallic silver

Black

*Additionally we can match your requested, non-standard colours - contact us for availability*

## KEY FEATURES

No screws | Gloss finish | Wall mountable

